

# PRE-U



**A STEP CLOSER TO A WORLD-CLASS  
UNIVERSITY AND BRIGHTER FUTURE**



# YOUR FUTURE BUILT TODAY

<b>4</b> campuses across Malaysia	<b>30+</b> years of empowering young minds	<b>13,000+</b> students currently served
<b>1,000+</b> employees nationwide	<b>70,000+</b> graduates whose lives we have touched	

### ABOUT INTI

At INTI, our mission is to bridge the needs of tomorrow through the competencies our students gain today, empowering them to become the leaders, innovators and game changers of the future. We are committed towards ensuring our students gain the competencies needed for the workplace of the future, and to work alongside the digital transformations driving today's global businesses in the Fourth Industrial Revolution.

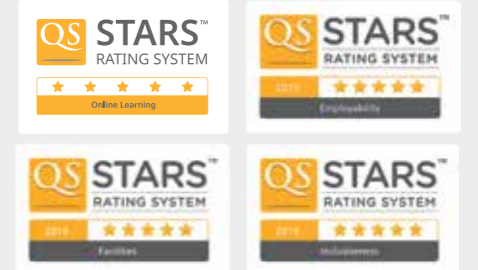
Through our innovative teaching and learning and extensive industry partnerships, we empower our students with the ability to work with smart machines, to process and analyse data for better decision-making, to learn about technologies that impact businesses and manufacturing processes, and to develop professional skills such as adaptability, working with multidisciplinary teams, problem-solving, and a thirst for lifelong learning.

By inspiring our students to explore their passions and discover their true potential through the right skills, tools and experiences, we continue to be a force of change in revolutionising education. Our commitment is to ensure exceptional graduate outcomes, and to transform our students into the dynamic leaders of the future – ones who will lead us in the Fourth Industrial Revolution, and beyond.

### 2022 QS WORLD UNIVERSITY RANKINGS: ASIA



Awarded **FIVE STARS** in the **QS STARS RATING**, achieving top marks in the categories of Online Learning, Employability, Facilities and Inclusiveness



INTI GRADUATE EMPLOYABILITY SURVEY 2017 VALIDATED BY **IBDO**

**99%** of INTI graduates are employed within 6 MONTHS of graduation

**91%** of INTI graduates are PAID HIGHER than the market minimum average

**60%** of INTI graduates get job offers BEFORE they graduate

# COLLABORATION WITH INDUSTRY PARTNERS

Over the years, INTI has cultivated a strong engagement with multinational companies and large local organisations on diverse platforms to foster innovation curricula and develop future-ready graduates.



The platforms include:

- Industry Awards / Scholarships
- Employer Projects
- Boot Camps and Career Workshops
- INTI Leadership Series
- Faculty Industry Attachments
- Industry Advisory Boards
- Industry Skills Certifications
- Employer Centric Curricula
- Internships and Job Placements
- Coaching and Mentoring



## We are INTERNATIONAL

Our internationally recognised education will enrich you with the right skills and attributes to excel at whatever you do and wherever you go.

### World Renowned Collaborations with Prestigious Universities

INTI offers exclusive franchise degrees and dual award degree programmes in partnership with some of the world's highest rated universities. These partnerships help to enhance your academic credentials and offer you access to some of the most prestigious institutions of higher learning globally.



**RANKED NO.15 UK UNIVERSITY\***  
\*Guardian University Guide 2016-2020



**AWARDED TOP GOLD RANKING IN UK'S  
TEACHING EXCELLENCE FRAMEWORK\***  
\*Teaching Excellence Framework (TEF) 2018



**ONE OF BRITAIN'S LARGEST AND MOST  
PROGRESSIVE MODERN UNIVERSITIES\***  
\*<https://www.cumulusassociation.org/members/SheffieldHallamUniversity/>



**AACSB ACCREDITED\***  
**-ONLY 5% OF WORLD'S BUSINESS SCHOOLS  
SHARE THIS HONOUR**

\*Association to Advance Collegiate Schools of Business (AACSB)



**NO.1 MOST INNOVATIVE UNIVERSITY  
IN THE NORTH\***

\*US News & World Report 2018

## INNOVATIVE Teaching & Learning

INTI integrates an array of proven approaches to teaching combined with revolutionary applications of technology in the classroom such as the innovative Blackboard Learning Management System.



Blackboard

With Blackboard, learning does not only happen in the classroom, it happens everywhere. It's a holistic, integrated system to collaborate and interact with fellow students and lecturers. Students can offer and gain feedback from their peers on coursework and perform self-assessments while learning in a safe, nurturing and holistic environment.

### GLOBAL RECOGNITION AND ACHIEVEMENT

Awarded to  
INTI INTERNATIONAL UNIVERSITY  
& COLLEGES for:



- Professional Development (2020, 2019 & 2017) •
- Student Success (2020 & 2019) •
- Leading Change (2018) •

### Supplementary Learning and Assessment Tools Used:



Interactivity Building Software Ranging  
From Games, Quizzes, Simulations, Presentations And More



Online Assessment Platform with Online Remote Proctoring



### INDUSTRY RELEVANCE

INTI has established a strong collaborative network with key leading companies in the industry and has been at the forefront of education innovation by offering an academic curriculum that is not only industry relevant but also immensely effective.

## INDIVIDUAL Development

INTI endeavours to include practical experiences in every programme it offers. From practical workshops taught by local and international guest lecturers and industry practitioners who share the ins and outs of the working world, to hands-on practical projects initiated by potential employers.



### THE MENTOR-MENTEE PROGRAMME Expand your social circles and future horizons

New students at INTI are paired up with a senior student who acts as a role model and offers assistance in easing them into academic life. The mentor-mentee programme supports new students to form social bonds and helps them become a part of the close-knit INTI community. These social bonds provide a significant part of the support a student receives during their journey at INTI.



### PARENT / TEACHER MEETINGS Get valuable feedback and grow

To keep abreast of a student's academic progress at INTI, both students and lecturers have access to the Blackboard Academic Learning system which helps them track the areas for improvement. Parents and caregivers are also invited to meet with the student's lecturers and academic staff to discuss their academic performance and explore ways to enhance it.



### LINKEDIN Building your personal brand and your link to a world of opportunities

INTI has established a collaboration with LinkedIn that leverages its powerful connections, and offers training for students to create their personal brand and profile that elevates their opportunities for employability. Regular workshops are conducted to teach students how to create a compelling resume that will resonate with potential employers. With a complete, job-ready LinkedIn profile even before they graduate, INTI students have the perfect platform to build and enhance their personal brand.

# MAKE YOURSELF FUTURE READY

## INTI PRE-UNIVERSITY - THE FIRST STEP TO SUCCESS

Standing out from the crowd in a highly competitive job market requires you to have a decisive edge. The INTI Pre-University course not only prepares you for tertiary studies at the world's best academic institutions, it also empowers you with a holistic foundation of both soft skills and knowledge to succeed later in life. If you have your sights set on studying in a world-class university, the INTI Pre-University programme is the first step to success.

## INTI UNIVERSITY PLACEMENT SERVICES TEAM

The success story of every winner has a team backing them up every step of the way. To get you started on the road to success, INTI has a dedicated University Placement Services team that helps you take the guesswork out of applying for university.

Applying to a university abroad can be daunting, with the myriad of rules and regulations to comply with and multiple procedures to follow in the application process. INTI's experienced University Placement Services team can help with the entire process, making it less stressful and easier to understand. As a complimentary service for INTI students, the team is ever-ready to assist and offer the following services:

- Assistance with the application process for scholarships and university placements along with preliminary budgeting for living abroad
- Professional advice on selecting the best academic institution to fit a student's needs
- Advice to craft an effective study plan to meet the English language entry requirements for a selected academic programme
- Regular mock interview workshops to enable students to practice their skills before facing an actual university placement interview
- Assistance with facilitating a letter of recommendation for university applications for eligible students
- Special talks by invited speakers from overseas universities on succeeding in the university application process

## INDUSTRY ATTACHMENT PROGRAMME

A pioneer addition to the INTI Pre-University programme, students can volunteer for internships with accredited partners and learn more about the working world in a safe, supervised manner.

## PARENT / TEACHER CONSULTATION SESSIONS

To ensure students are progressing on the right path and caregivers are properly apprised of their child's progress, the INTI Pre-University course integrates regular parent-teacher meetings so that both sides can highlight any concerns that they have.

Student performance is also regularly monitored with an early warning system set in place to help bring them back on track should they fall behind or encounter challenges in their studies. For those who need further help, INTI has also provisioned Peer Assisted Study Sessions (PASS) where senior students help to guide academically poor students in order to improve their performance.



# WORLD-CLASS SUBJECT MATTER EXPERTS

The INTI Pre-University programme is staffed by some of the world's best lecturers as well as a team of respected Subject Matter Experts (SME). Each SME is an authority in their own field, offering specialised, world-class expertise in an important subject, business area or technical field, allowing INTI students exclusive access to their expert knowledge. INTI's SMEs also act to ensure that the courses offered at the INTI Pre-University programme continue to be relevant and are on par with the world's highest standards. The results speak for themselves.

## CAMBRIDGE A-LEVEL

Over the years, INTI has produced Cambridge A-Level students who have achieved Outstanding Cambridge Learner Awards. Recipients of the award are recognised as the world's best-scoring students, with INTI Pre-University students earning Top in the World and Top in Malaysia for Biology, Business, Economics, Law, Mathematics and Physics.



## MEET SOME OF INTI'S SUBJECT MATTER EXPERTS

### CAMBRIDGE A-LEVEL



**SURESH ARUMUGAM**  
Economics  
27 years of experience



**TED CHUN YEW**  
Mathematics  
18 years of experience



**SARA SEAH**  
Economics and Business  
21 years of experience



**NG WING MEI**  
Physics  
32 years of experience



**DR. RAMANI POOSPORAGI**  
Biology  
16 years of experience



**TAN AI LIAN**  
Biology  
16 years of experience



**TEOH SIEW CHIN**  
Physics  
9 years of experience



**DINASH KANDASAMY**  
Physics  
9 years of experience



**DR. MARISA KHOO**  
Biology  
10 years of experience

### FOUNDATION



**OOI SAIK HUEY**  
Biology  
13 years of experience



**LIM SZE THENG**  
Chemistry  
15 years of experience



**DR. NAZLINA MIRSULTAN**  
Business and Management  
18 years of experience



**LEONG WAI CHING**  
Biology  
13 years of experience



**DR. OOI KUAN SAN**  
Chemistry  
15 years of experience



**LINDA LAI**  
Economics  
25 years of experience



**AROKIA RAJ**  
Information Technology  
17 years of experience



**LOH SHIN KING**  
Physics  
17 years of experience



**CHAN PEE VEN**  
Communication  
20 years of experience

# RECOGNISED AND ACCEPTED WORLDWIDE

Since 1986, our Pre-University programmes have enabled our students to enter the following prestigious universities.

## AUSTRALIA

Australian National University  
Monash University  
The University of Adelaide  
The University of Melbourne  
The University of New South Wales  
The University of Queensland  
The University of Sydney  
The University of Western Australia  
University of Tasmania  
Queensland University of Technology  
Swinburne University of Technology

## GERMANY

Mannheim University of Applied Sciences  
University of Mannheim

## HONG KONG

The Chinese University of Hong Kong  
The Hong Kong University of Science  
and Technology  
The University of Hong Kong

## INDIA

Dinaya College, Salem  
Manipal University, Manipal  
Sri Ramachandra University

## IRELAND

Royal College of Surgeons, Ireland

## NEW ZEALAND

Auckland University of Technology  
The University of Auckland  
University of Otago  
University of Canterbury

## SINGAPORE

Nanyang Technological University  
National University of Singapore

## UNITED KINGDOM

Cardiff University  
Durham University  
Heriot-Watt University  
Imperial College  
King's College London  
London School of Economics  
Oxford University  
The University of Bradford  
The University of Manchester  
The University of Sheffield  
The University of Warwick  
University College London  
University of Cambridge  
University of East Anglia  
University of Edinburgh  
University of Hertfordshire  
University of Leeds  
University of Leicester

## UNITED STATES

Massachusetts Institute of Technology  
Stony Brook University

# TOP ACHIEVERS

CAMBRIDGE A-LEVEL 2021\*



4A\*  
**YEE JIE HONG**  
Former school:  
SMK Damansara Jaya



4A\*  
**ALICIA WONG HOR YAN**  
Former school:  
Han Chiang High School



4A\*  
**BERNARD LIM WEE SHAN**  
Former school:  
SMJK Chung Ling



4A\*  
**CHAI YI CHEN**  
Former school:  
SM Poi Lam



4A\*  
**CHEAH CHUN JIE**  
Former school:  
Han Chiang High School



4A\*  
**CHEAH WEN CHANG**  
Former school:  
Han Chiang High School



4A\*  
**DESMOND LIM ZHEN SHENG**  
Homeschool



4A\*  
**ENG JIA QIAN**  
Former school:  
SMJK Chung Ling



4A\*  
**HORSTANN HO RUI YAO**  
Former school:  
Han Chiang High School



4A\*  
**JERALD HO JIA YUNG**  
Former school:  
Han Chiang High School



4A\*  
**LAU SHAO WEI**  
Former school:  
SMJK Chung Ling



4A\*  
**OH JIE YANG**  
Former school:  
Han Chiang High School



4A\*  
**TAN WON LUN**  
Former school:  
Han Chiang High School



4A\*  
**ZECHARIAH BOEY  
SHENG MING**  
Former school:  
Han Chiang High School



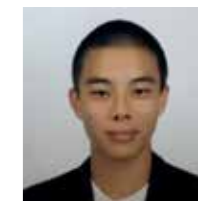
4A\*  
**SHRIVARSHANN A/L SRIJEVAN**  
Former school:  
Zenith International School,  
Seremban



3A\*1A  
**TAN WEI YIN**  
Former school:  
SMJK China Pulau Pinang



3A\*1A  
**MANDY LOW PEI YI**  
Former school:  
SMJK Heng Ee



3A\*1A  
**ETHAN LEE JIA HUA**  
Former school:  
SMJK Phor Tay



3A\*1A  
**AMOS LENG SHANG XUAN**  
Former school:  
King's Academy



3A\*1A  
**TAN YONG JIE**  
Former school:  
Hin Hua High School



3A\*1A  
**MARY KOH KHA I INN**  
Former school:  
Chong Hwa Independent  
High School, Kuala Lumpur



3A\*1A  
**ADRIAN WONG XUN JING**  
Former school:  
Pusat Tuition Visi Tutor,  
Puchong



3A\*  
**TIU WEN BIN**  
Former school:  
SMJK Chung Ling Butterworth



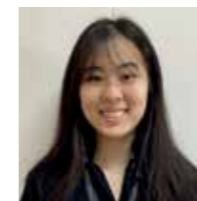
3A\*  
**TANG LING**  
Former school:  
SMJK Sin Min



3A\*  
**TAN YONG PENG**  
Former school:  
Han Chiang High School



3A\*  
**ROBIN SOH KWOK HUR**  
Former school:  
Han Chiang High School



3A\*  
**FOO XIAO XUAN**  
Former school:  
Chung Ling Private High  
School



3A\*  
**ANG WEI SHUANG**  
Former school:  
SMK Convent Green Lane



4A  
**SA QI XUAN**  
Former school:  
SMK(P) Methodist, Melaka

and more...

\* Based on Cambridge International A-Level May/June 2021 Examination Results.

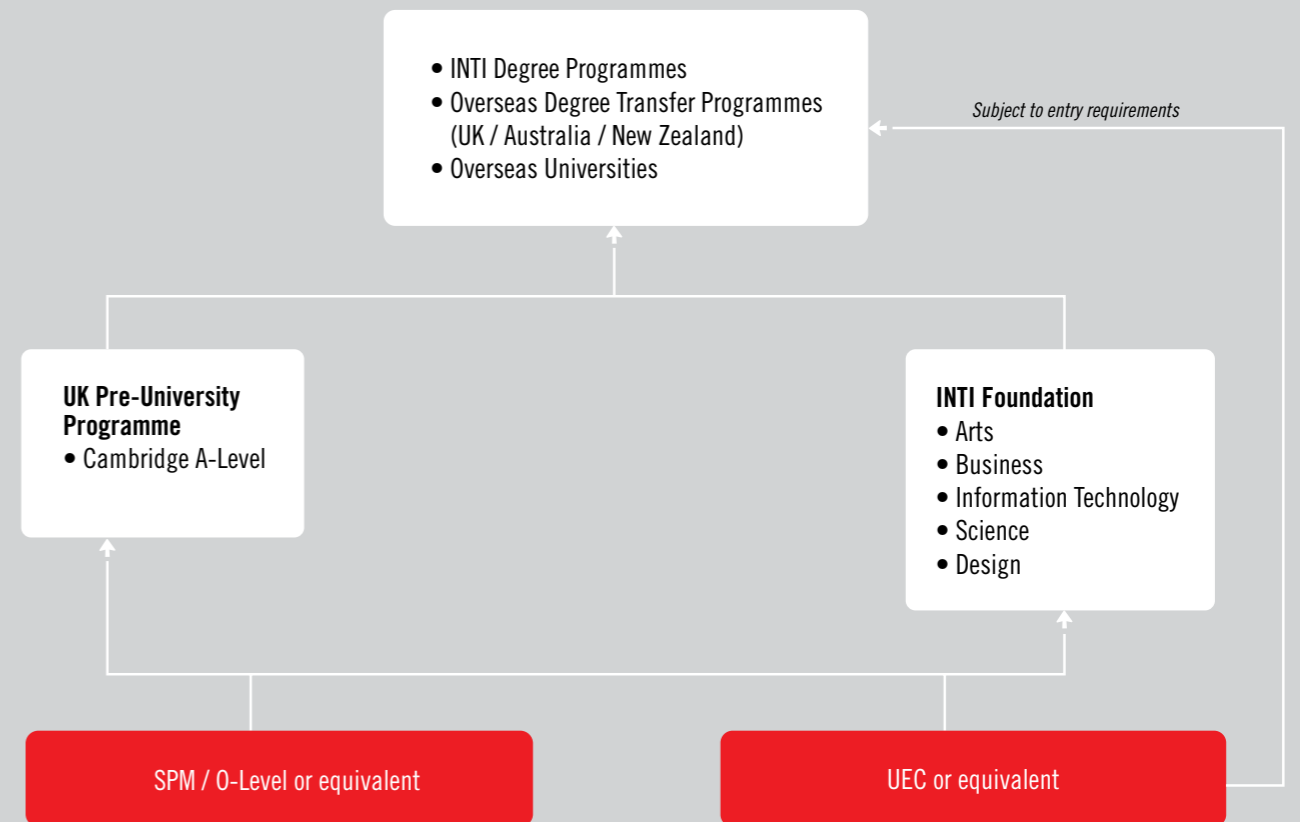
# CONTENT

	PAGE
Pathway	15
Entry Requirements	16
Cambridge A-Level	17
Foundation in Arts	18
Foundation in Science	19
Foundation in Business	20
Foundation in Information Technology	21
Foundation in Design	22

## INTI PRE-U PATHWAY

### Popular Majors:

Accounting / Actuarial Science / Biotechnology / Biomedical Science / Business / Computing & IT / Dentistry / Engineering / Finance / Food Science / Law / Mass Communication / Medicine / Pharmacy / Psychology / Physiotherapy / International Business / Event Management / Quantity Surveying / Marketing





# ENTRY REQUIREMENTS

## CAMBRIDGE A-LEVEL

SPM / O-LEVEL / EQUIVALENT\*:  
5 credits including English

UEC / EQUIVALENT\*:  
3Bs including English

## FOUNDATION IN ARTS

SPM / O-LEVEL / EQUIVALENT:  
5 credits

UEC / EQUIVALENT:  
Pass UEC with at least Grade B in 3 subjects

## FOUNDATION IN BUSINESS

SPM / SPVM / O-LEVEL / EQUIVALENT:  
5 credits\*\*

UEC / EQUIVALENT:  
3Bs\*\*

## FOUNDATION IN INFORMATION TECHNOLOGY

SPM / SPMV / O-LEVEL / EQUIVALENT:  
5 credits including Mathematics

UEC / EQUIVALENT:  
3Bs including Mathematics

(For all the above entry: Students are required to obtain credits including Additional Mathematics OR credits in Mathematics & 1 Science/Technology/ Engineering related subjects for student who wants to progress to Computer Science Degree programme)

## FOUNDATION IN DESIGN

SPM / O-LEVEL / EQUIVALENT:  
5 credits including one Art Subject.

UEC / EQUIVALENT:  
3Bs

## English Language Requirements

SPM / UEC: Minimum Credit  
CIE: Grade C  
International applicants with local qualification: IELTS: 5.5

Candidates without an Art subject or who do not have a credit in Art must pass Portfolio Review or Art Test conducted by the College.

## FOUNDATION IN SCIENCE

*Engineering Pathway#*

SPM / O-LEVEL / EQUIVALENT:  
5 credits including Mathematics and Physics

UEC / EQUIVALENT:  
3Bs including Mathematics and Physics

Note: Students are required to obtain a credit in BM and English at SPM / UEC prior to progressing to degree in Quantity Surveying

*Pure Science / Other Science Area Pathway#*

SPM / O-LEVEL / EQUIVALENT:  
5 credits including Mathematics and two other Pure Science subjects and a pass in Bahasa Malaysia and English

UEC / EQUIVALENT:  
3Bs including Mathematics, two other Science subjects and a pass in English

Biological Science / Bioscience Pathway:  
Depending on the final degree choice (Medicine, Dentistry, Pharmacy, Health Science and Allied Health).  
Please refer to the Head of Programme for further information on the requirements.

*Computer Science & Information Technology Pathway#*

SPM / O-LEVEL / EQUIVALENT:  
5 credits including Mathematics (Credit in Additional Mathematics / equivalent required for Computer Science)

UEC / EQUIVALENT:  
3Bs including Additional Mathematics, two Science subjects and a pass in English

# CAMBRIDGE A-LEVEL (CAL)

Conducted by Cambridge Assessment International Education (Cambridge), this programme provides students with a wealth of options to study a wide range of professional courses at the best universities in the world. It also equips them with reasoning and thinking skills that are necessary for degree courses.

The CAL consists of two levels: the Advanced Subsidiary (AS) Level and the Advanced 2 (A2) Level.

## **International recognition**

The Cambridge A-Level is one of the most recognised qualifications around the world. For over 50 years, it has been accepted as proof of academic ability for entry into local and foreign universities and institutions of higher learning.

- Good A-Level grades are key to admission into the world's leading universities and institutions of higher learning
- Good A-Level grades can also result in one full year of advanced standing at universities in the United States and Canada

## **Assessment**

The Cambridge AS and A2 Level examinations are conducted in May / June and October / November. The May / June examination results are released in August, while October / November results are released in January. Students will receive a certificate after completing the AS level examination and the A-Level certificate after completing both the AS level and A2 level examinations.

## **Examination dates**

May / June  
October / November

## **Offered at**

INTI International College Subang  
(R3/010/3/0398)(11/26)(A7476)

INTI International College Penang  
(R2/010/3/0208)(06/24)(A10116)

**INTAKES: JAN & JUL**

## **Duration**

1.5 years

## **Subjects offered**

- Accounting\*
- Biology
- Business
- Chemistry
- Economics
- Further Mathematics\*\*
- Law
- Mathematics
- Physics

## **Recommended subject combinations**

Different recommended subject combinations are available, providing students with a balanced mixture of subjects to meet the subject entry requirements for their university studies. Students can choose either three or four subjects from one of the combinations.

### **Medicine, Pharmacy, Dentistry, Sciences**

- Biology
- Chemistry
- Mathematics
- Physics

### **Engineering, Actuarial Science, Sciences**

- Chemistry
- Economics
- Further Mathematics\*\*
- Mathematics
- Physics

### **Law, Mass Communication, Finance, Commerce, Accounting**

- Accounting\*
- Business Studies
- Economics
- Law
- Mathematics

\* Subject prerequisites apply.

\*\* Depending on your final degree choice. Please refer to Head of Programme for further clarification.

# Subject to campus availability.

\* Accounting in Penang campus is only offered for April and July intake.  
Accounting in Subang campus is offered in January, April and July intake.

\*\* Can only be taken as 4th subject in both campuses.

Please consult the programme counsellors on subject combinations before registering. Students are advised to refer to the respective universities for detailed information on subject prerequisites.

# FOUNDATION IN ARTS

This programme is specially designed to prepare students for the field of communication. It also has few subjects that allows students to venture into Business, Psychology and Sociology. There are four major communication subjects to enhance understanding in the field of communication. As these subjects are also substantial in business degree programme, students have the option to choose electives or pathway of Business or Psychology. Students are also given an insight into creative and critical side of writing to prepare them for an ultimate unique career.

## Mass Communication Pathway

This programme is designed to enhance communication skills and media literacy skills required of future media practitioners. Students will be given an insight into the creative and critical side of writing, to prepare them for a career that requires the use of words and images to creatively and effectively communicate ideas via media such as television, radio, newspapers and the Internet.

## Business Management Pathway

This programme will also allow students to study courses relevant to their desired degrees in the areas of management. These courses provide a fundamental understanding of concepts and principles of how an organisation works, organisational structure and behavior, market structure and consumer behavior.

## Psychology Pathway

This programme is a pathway to a specialized degree in field of Psychology. These course equips students with fundamental understanding of concepts and theories to address intellectual, emotional, social, and psychological needs of individuals.

## Assessment

Assessment of individual courses in this programme consists of two components:

- Continuous coursework (50%)
- Final examination (50%)

The continuous coursework component comprises different assessment tasks such as projects, assignments, laboratory work, presentations, tests, and others as assigned throughout each semester. The final examination is conducted at the end of each semester. The assessments are subject to quality assurance procedures to maintain high standards and ensure fair assessment.

## Offered at

INTI International University  
(R2/010/3/0092)(04/23)(A8768)

**INTAKES: JAN, MAY & AUG**

INTI International College Subang  
(R/010/3/0341)(04/25)(MQA/FA5600)

**INTAKES: JAN, APR & AUG**

## Duration

1 Year

*\* Offering of electives, please consult the Head of Programme.*

## Progression

Students who have successfully completed the Foundation in Arts can choose to enter the following undergraduate programmes:

### Mass Communication

- 3+0 BA(Hons) Mass Communication, in collaboration with University of Hertfordshire, UK
- Bachelor of Mass Communication (Hons), in collaboration with University of Hertfordshire, UK
- Bachelor of Media and Communication (3+0) in collaboration with Swinburne University of Technology, Australia
- 4+0 Bachelor of Arts in Communication, in collaboration with Southern New Hampshire University, USA

### Business

- Bachelor of Business (Hons) with Psychology
- 3+0 Bachelor of Business (major in Finance/Accounting/ Marketing/ Management/ International Business / Human Resource Management), in collaboration with Swinburne University of Technology, Australia
- 3+0 BA(Hons) Marketing, in collaboration with University of Hertfordshire, UK
- 3+0 BA(Hons) Event Management & Marketing, in collaboration with University of Hertfordshire, UK

### Psychology

Bachelor of Arts in Psychology 4+0, in collaboration with Southern New Hampshire University, USA

## Courses offered

- Basic Computing
- English Language Skills 1
- English Language Skills 2
- Fundamentals of Business Management
- General Studies
- Human Communication
- Introduction to Business Studies
- Introduction to Intercultural Communication
- Introduction to Mass Media
- Self-Development Skills
- Skills for Creative Thinking

### Electives\* (Please choose one Combination)

- Basic Sociology
- Digital Communication
- Fundamentals of Psychology
- Macroeconomics
- Microeconomics
- Visual Communication

### Combination 1

- Digital Communication
- Visual Communication

### Combination 2

- Macroeconomics
- Microeconomics

### Combination 3

- Basic Sociology
- Fundamentals of Psychology

# FOUNDATION IN SCIENCE

This programme prepares students for admission into Science or Engineering-related degree courses at INTI. It is also an exit certificate course that enables students to apply directly to other universities in Malaysia. It is designed to equip students with solid fundamental knowledge that will enable them to pursue their degree studies in the areas of Biotechnology, Engineering, and Allied Health Sciences.

Students have a choice of Engineering, Biological Science or Pure Science. Those who wish to pursue engineering based programmes need to take engineering elective subjects and those who wish to pursue biology based programmes need take the biological science elective subjects. However, students who opt for the pure science pathway can pursue their studies in engineering or any science based undergraduate programme.

*\* Only offered in Penang campus.*

*\*\* Applicable to INTI International University only.*

## Assessment

Assessment of individual courses consists of two components:

- Continuous coursework (50%)
- Final examination (50%)

The continuous coursework component comprises different assessment tasks such as projects, assignments, laboratory work, presentations, tests, and others as assigned throughout each semester. The final examination is conducted at the end of each semester. The assessments are subject to quality assurance procedures to maintain high standards and ensure fair assessment.

## Offered at

INTI International University  
(R2/010/3/0198)(03/24)(A10019)

**INTAKES: JAN, MAY & AUG**

INTI International College Subang  
(N/010/3/0445)(04/22)(MQA/FA8898)

INTI International College Penang  
(R/010/3/0422)(09/2028)(MQA/FA8334)

**INTAKES: JAN, APR & AUG**

## Duration

1 Year

## Progression

Students who have successfully completed the Foundation in Science can choose to enter the following undergraduate programmes:

### Medical & Health Sciences

- B.Sc. (Hons) Physiotherapy
- Bachelor of Traditional Chinese Medicine (Hons)

### Biotechnology & Life Sciences

- Australian Degree Transfer Programme (Science)
- Bachelor of Biotechnology (Hons)

### Engineering

- 3+0 B.Eng. (Hons) in Electrical & Electronic Engineering, in collaboration with Coventry University, UK\*
- 3+0 B.Eng. (Hons) in Mechanical Engineering, in collaboration with Coventry University, UK\*
- Bachelor of Civil Engineering with Honours
- Bachelor of Mechanical Engineering with Honours
- B.Sc. (Hons) Quantity Surveying

## Computing & IT

- Bachelor of Information Technology (Business Analytics), in collaboration with Coventry University, UK
- Bachelor of Computer Science (Mobile Computing / Software Engineering / Network and Security / Business Analytics / Cloud Computing), in collaboration with Coventry University, UK
- 3+0 Bachelor of Science in Computer Science, in collaboration with Coventry University, UK
- 3+0 Bachelor of Science in Computing, in collaboration with Coventry University, UK
- 3+0 Bachelor of Computer Science in collaboration with Swinburne University of Technology, Australia

## Courses offered

- Chemistry 1
- Chemistry 2
- English Language Skills 1
- English Language Skills 2
- General Studies
- Mathematics 1
- Mathematics 2
- Self-development Skills
- Skills for Creative Thinking

### Elective papers for Biological Science/ Bioscience\*\* Pathway

- Basic Computing
- Biology 1
- Biology 2
- Statistics

### Elective papers for Pure Science / Other Science Area\* Pathway

- Biology 1
- Biology 2
- Physics 1
- Physics 2

### Elective papers for Engineering Pathway

- Physics 1
- Physics 2
- Engineering Mechanics
- Basic Computing

# FOUNDATION IN BUSINESS

The programme aims to equip students with both the academic knowledge as well as industry skills to compete in the international market. The programme introduces students to the world of business with an initial grounding in management skills. Students will obtain solid fundamental understanding of concepts, principles, structures and behaviors of an organization, the competitive business environment, and consumers behavior. The academic knowledge and practical skills gained will help them springboard into the next level, a Business degree programme.

Students will study courses relevant to their desired degrees in the areas of management and accounting. These courses provide a fundamental understanding of concepts and principles of how an organisation works, organisational structure and behaviour, market structure, and consumer behaviour.

## Assessment

Assessment of individual courses in the Foundation Programme consists of two components:

- Continuous coursework: 50%
- Final examination: 50%

The continuous coursework component comprises different tasks such as projects, assignments, laboratory work, presentations, tests, and others as assigned throughout each semester. The final examination is conducted at the end of each semester. The assessments are subject to quality assurance procedures to maintain high standards and ensure fair assessment.

## Offered at

INTI International University  
(R2/010/3/0199)(04/24)(A4602)

**INTAKES: JAN, MAY & AUG**

INTI International College Subang  
(R2/010/3/0268)(12/24)(A10123)

INTI International College Penang  
(R2/010/3/0003)(10/2025)(A11600)

INTI College Sabah  
(R2/010/3/0259)(06/24)(A10005)

**INTAKES: JAN, APR & AUG**

## Duration

1 Year

## Progression

Students who have successfully completed the Foundation in Business can choose to enter the following undergraduate programmes:

### Business

- Australian Degree Transfer Programme (Commerce)
- Bachelor of Accountancy (Hons)
- Bachelor of Business (Hons) (Accounting/ Business Administration/Finance/Marketing/ Human Resources Management /International Business/Psychology/Logistic and Supply Chain Management) in collaboration with University of Hertfordshire, UK
- 3+0 BA (Hons) Accounting & Finance, in collaboration with University of Hertfordshire, UK
- 3+0 BA (Hons) Business Administration, in collaboration with University of Hertfordshire, UK
- 3+0 BA (Hons) Finance, in collaboration with University of Hertfordshire, UK
- 3+0 BA (Hons) Marketing, in collaboration with University of Hertfordshire, UK
- 3+0 BA (Hons) Event Management & Marketing, in collaboration with University of Hertfordshire, UK
- 3+0 Bachelor of Business in collaboration with Swinburne University of Technology, Australia

## Courses offered

Students are compulsory to complete 13 courses as follows:

- English Language Skills 1
- English Language Skills 2\*
- Fundamentals of Business Management
- Introduction to Business Studies
- Fundamentals of Accounting
- Basic Computing
- Fundamentals of Mathematics
- Business Statistics
- Microeconomics
- Macroeconomics
- General Studies
- Skills for Creative Thinking
- Self-Development Skills

*\*Pre-requisite required*

# FOUNDATION IN INFORMATION TECHNOLOGY

The programme aims to promote students to progress into various fields of IT and Computer Science Degrees, so that they can thrive in an increasingly competitive employment market. It achieves this through a blend of academic study and skills development. The programme is designed for students who are seeking a career in the field of IT and Computer Science which aimed to meet the industry demands by producing graduates who are qualified, competent, creative and innovative, and who will eventually be the expert in this industry. Graduates of this program may progress to an undergraduate degree, namely Computer Science, Information Technology, Computing, and Information System.

Students will take up Programming Techniques, Introduction to Database Management System and Advanced Mathematics to enable an understanding of the technical and humanistic aspects of computing.

## Assessment

Assessment of individual courses in the Foundation Programme consists of two components:

- Continuous coursework: 50%
- Final examination: 50%

The continuous coursework component comprises different tasks such as projects, assignments, laboratory work, presentations, tests, and others as assigned throughout each semester. The final examination is conducted at the end of each semester. The assessments are subject to quality assurance procedures to maintain high standards and ensure fair assessment.

## Offered at

INTI International University  
(N/482/3/0170) (06/26) (MQA/PA14588)

**INTAKES: JAN, MAY & AUG**

INTI International College Subang  
(N/482/3/0169) (05/2026) (MQA/PA14514)

INTI International College Penang  
(N/482/3/0172) (07/2026) (MQA/PA14720)

**INTAKES: JAN, APR & AUG**

## Duration

1 Year

## Progression

Students who have successfully completed the Foundation in Information Technology can choose to enter the following undergraduate programmes:

### Information Technology

- Swinburne University of Technology, Australia
- 3+0 Bachelor of Computer Science
- 3+0 Bachelor of Business Information Systems

Coventry University, UK

- 3+0 Bachelor of Science (Hons) in Computer Science
- 3+0 Bachelor of Science (Hons) in Computing
- Bachelor of Computer Science(Hons)
- Bachelor of Computer Science(Hons) Business Analytics
- Bachelor of Computer Science(Hons) Cloud Computing
- Bachelor of Computer Science(Hons) Mobile Computing
- Bachelor of Computer Science(Hons) Network and Security
- Bachelor of Computer Science(Hons) Software Engineering
- Bachelor of Information Technology (Hons)
- Bachelor of Information Technology (Hons) Business Analytics

## Courses offered

Compulsory (13 courses):

- English Language Skills 1
- English Language Skills 2\*
- Introduction to Business Studies
- Fundamentals of Mathematics
- Advanced Mathematics
- Business Statistics
- General Studies
- Skills for Creative Thinking
- Self-Development Skills
- Basic Computing
- Programming Techniques
- Data Communication and Networking\*
- Introduction to Database Management System\*

*\*Pre-requisite required*

# FOUNDATION IN DESIGN

The Foundation in Design is an established programme that gives students an early access to a Sheffield Hallam University degree. The course focuses on building creative thinking, research and drawing skills. Students learn how to visualise ideas using their artistic skills along with extensive opportunities to experiment and explore their potential with an emphasis on hands-on project-based learning. The course also offers field trips to areas of artistic worth such as museums and art exhibitions, as part of learning experience.

The programme enables students to develop a range of practical skills and fundamental knowledge in art and design, preparing them for smooth progression to Sheffield Hallam University design degree of their choice at ICAD.

## Highlights

- Pathway to a quality UK Design Degree offered at INTI
- The curriculum covers broad theoretical and practical design skills
- Teaching and learning is supported by experienced lecturers, ensuring a smooth progression to degree studies
- Specialist lecturers who are also design professionals
- Experiential and innovative learning via Project-based learning
- The programme and curriculum emphasise multi-cultural perspectives
- Design-driven learning environment with state-of-the-art facilities

## Offered at

INTI International College Subang  
(R2/010/3/0417)(03/27)(MQA/FA1292)

**INTAKES: JAN, APR & AUG**

## Duration

1 Year

## Programme structure

- 3D Design
- Critical Studies
- Design Communication Skills 1
- Design Communication Skills 2
- Design Theories to Practices
- Design Project
- English Language Skills 1
- English Language Skills 2
- General Studies
- History of Art & Design
- Portfolio Design
- Self-development Skills
- Skills for Creative Thinking



The Foundation in Design at INTI is recognised by Sheffield Hallam University (SHU), UK as providing progression on to any of its three degree programmes at INTI: BA (Hons) Fashion Management and Communication, BA (Hons) Graphic Design and BA (Hons) Interior Design.

\* Progression to a SHU degree is subject to English language proficiency and the successful review of a relevant portfolio.

# HEAR WHAT OUR ALUMNI SAY

“I must confess, before enrolling in INTI, I had low hopes of being a top achiever as I heard that it was one of the hardest pre-u courses around. Being surrounded and guided by good lecturers proved it was possible and I achieved CGPA 3.88. I've learned that to excel, one must be comfortable asking questions; don't be shy to tap your lecturer's brains. Understanding a topic is the key to mastering it.”

**AU YONG TIEN WAY**  
Foundation in Science



“I think INTI's greatest asset is its formidable team of lecturers. They are helpful, knowledgeable and give whole-hearted guidance and motivation to their students. INTI's renowned teaching system has helped me to achieve excellent results beyond my wildest dreams. Having completed my pre-university programme, I look forward to pursuing my degree and continuing on to a law-related career where I can contribute to society.”

**EUGENE ONG WAY HAN**  
Cambridge A-Level

“Like many, I gravitated to INTI because of its stellar reputation for providing high-quality education, international collaborations with prestigious universities. Personally, what makes INTI stand out from other academic institutions is its strong focus on self-development. My lecturers constantly encouraged us to think about ways to contribute back to society, beyond achieving our personal goals and excelling academically.”

**KHOO YAN YING**  
Cambridge A-Level



“A good teacher can bring out the best in their students and the caring staff at INTI are living examples. Thanks to the gentle guidance from my lecturers, I've grown into a more mature, independent person who is able to make the most of my time in INTI. From participating in cool science projects to making the Dean's list twice, I have many fond memories of this place.”

**THIVYA DASS A/P PERUMAL DASS**  
Foundation in Science

## INTI NETWORK

**INTI INTERNATIONAL UNIVERSITY** DU022(N)

06-798 2000 |

Persiaran Perdana BBN, 71800 Putra Nilai

**INTI INTERNATIONAL COLLEGE SUBANG** DK249-01(B)

03-5623 2800 |

No. 3, Jalan SS15/8, 47500 Subang Jaya

**INTI INTERNATIONAL COLLEGE PENANG** DK249-02(P)

04-631 0138 |

No. 1-Z, Lebuh Bukit Jambul, 11900 Penang

**INTI COLLEGE SABAH** DK249-03(S)

088-765 701 |

Lot 17-20, Phase 1B & Phase 3, Off Jalan Kompleks JKR,  
Taman Putatan Baru, Putatan Point, 88200 Putatan, Kota Kinabalu

## INTI EDUCATION COUNSELLING CENTRES (266729-P)

**IPOH** 05-241 1933 |

No. 258, Jalan Sultan Iskandar, 30000 Ipoh

**JOHOR BAHRU** 07-364 7537 |

No. 25, 25-01, Jalan Austin Heights 8/1, Taman Austin Heights, 81100 Johor Bahru

**KUANTAN** 09-560 4657 |

B16, Jalan Seri Kuantan 81, Kuantan Star City II, 25300 Kuantan

## Get Connected with INTI!



[NEWINTI.EDU.MY](http://NEWINTI.EDU.MY)



[fb.com/INTI.edu](https://fb.com/INTI.edu)



[twitter.com/INTI\\_edu](https://twitter.com/INTI_edu)



[@INTI\\_edu](https://@INTI_edu)