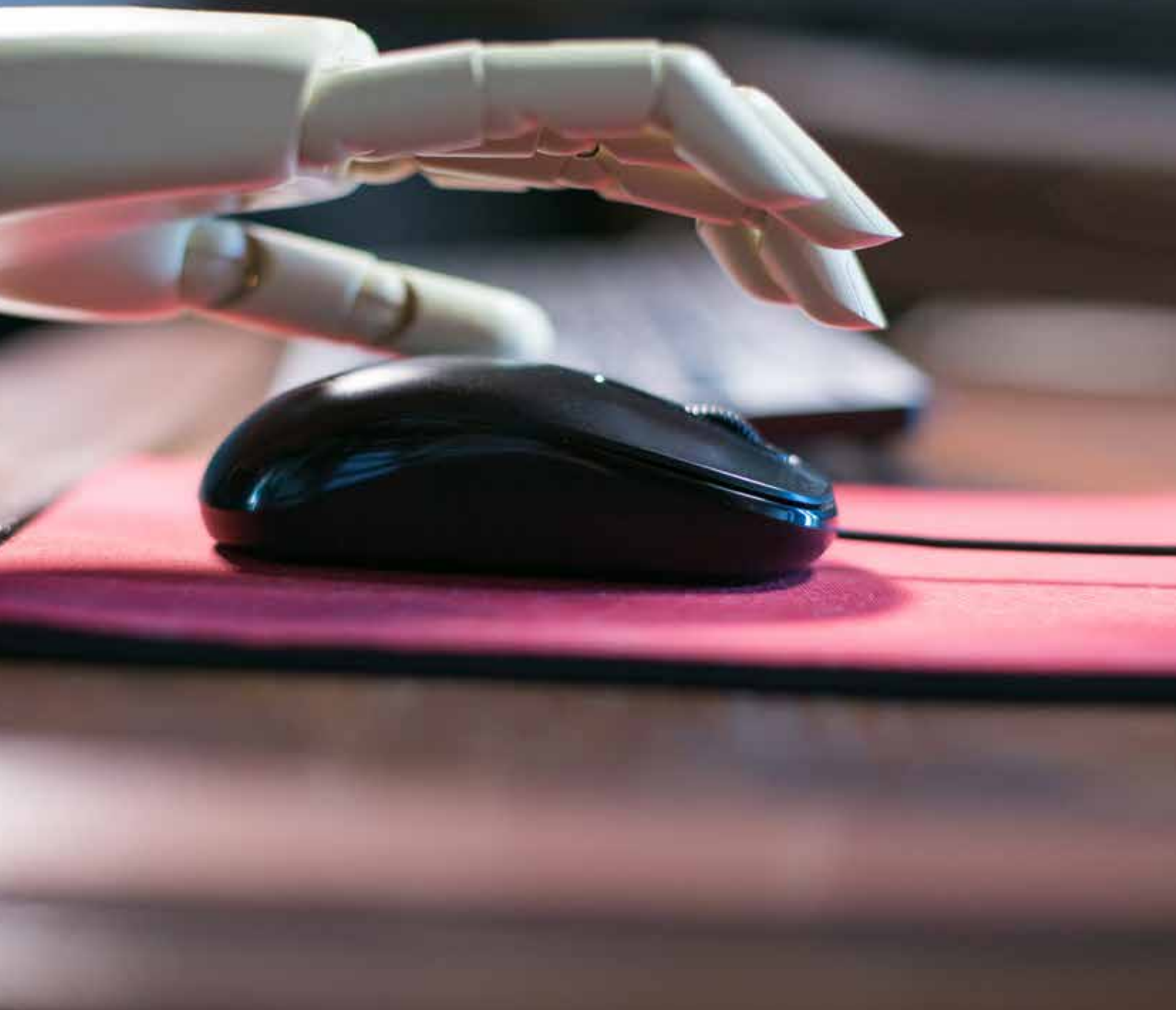


DOCTOR OF PHILOSOPHY (INNOVATION AND TECHNOLOGY)



DOCTOR OF PHILOSOPHY (INNOVATION AND TECHNOLOGY)

This programme enable students to integrate multiple specialties that are essential to innovation initiatives in the value chain. These specialties include creativity, the ability to harness collective intelligence, and the capability of adding value creation in various fields. This programme also aims to facilitate knowledge creation in the field of innovation and technology and hence, create better solutions for global challenges.

Highlights

- Students will achieve a high standard of communication skills, critical thinking skills, problem solving skills, information management skills, and an entrepreneurial mind-set in the field of innovation and technology.
- Prepares students with the latest data analytic and modelling tools that will enable them to manage the huge amount of data and convert into useful information.
- Graduates will be able to contribute professionally as leaders in the area of innovation and technology in academic and workplace organisations.

Research Areas

- Reverse Engineering
- Smart Manufacturing
- Process / Production Optimisation
- Data Digitisation
- Innovation in Healthcare and Medical Sciences
- Digital Construction
- Additive Manufacturing
- Data Mining
- Artificial Intelligence
- Biotechnology
- Nanotechnology
- Industrial and Environmental Technology

Programme Structure

- Research Methodology
- Proposal Defense
- Research Thesis Supervision
- Viva Voce in the final year
- Students are required to produce a thesis for fulfillment of the graduation requirement

Offered at:

INTI International University
(N/545/8/0097)(02/27)(MQA/PA12510)

INTAKES: JAN, MAY & SEP

Duration

Full Time: 3 years

Part Time: 4 years

Entry Requirements

- A recognised Master's degree; AND

Meet any of the following English language requirements:

- i. A Master's degree conducted in English*; OR
- ii. Credit 6 in MCE/SPM/GCE level;
- iii. MUET Band 3.5 / TOEFL score of 500 / IELTS score of 5.0; OR
- iv. Equivalent score from any of the above obtained at undergraduate level at a recognised university*

* A copy of document from the university is required during submission as a proof of English proficiency

Any other qualification with relevant working experience will be subject to approval by the Senate