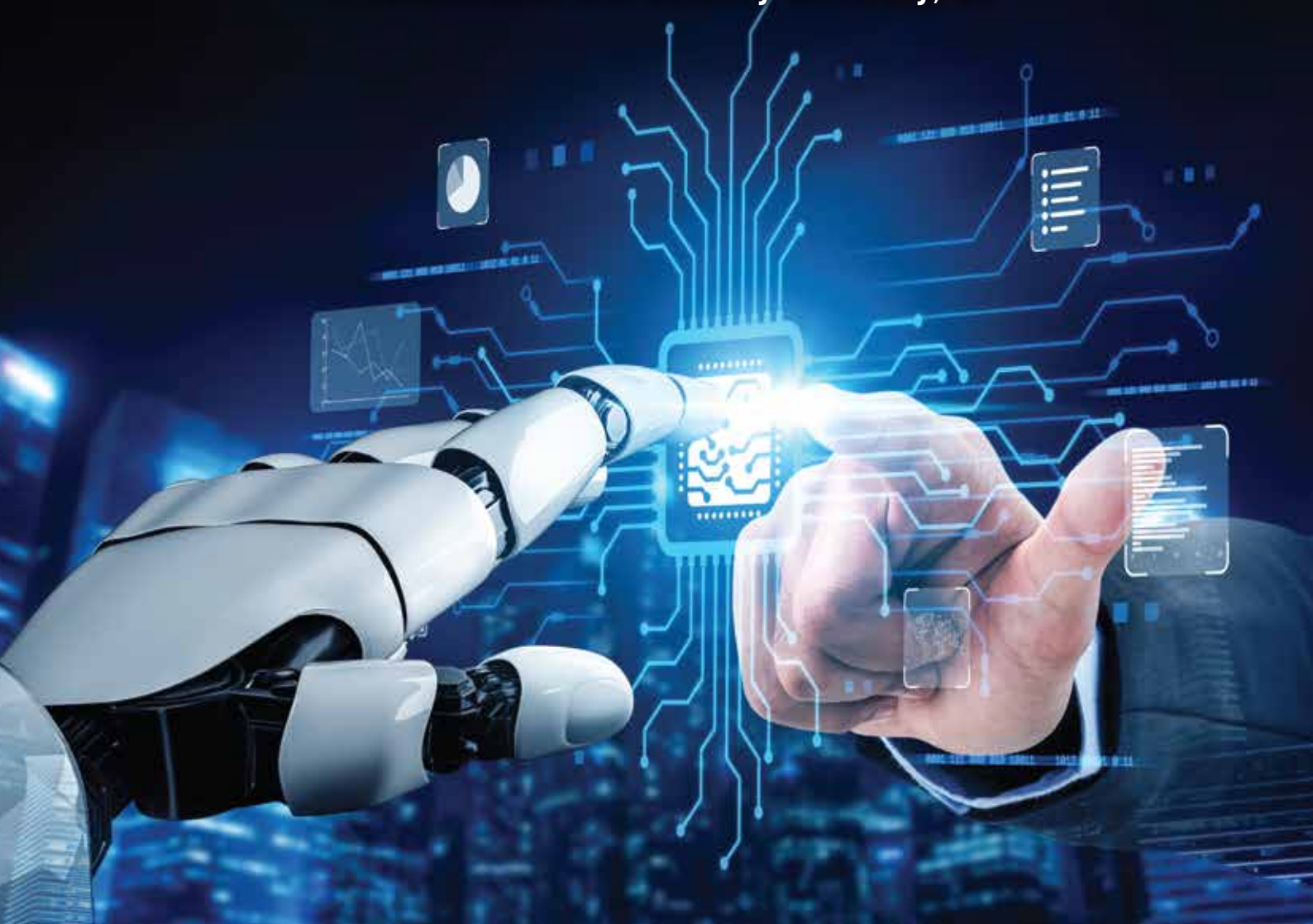


new **BACHELOR OF SCIENCE WITH
HONOURS IN COMPUTER SCIENCE
WITH ARTIFICIAL INTELLIGENCE 3+0**
in collaboration with Coventry University, UK



The Computer Science with Artificial Intelligence programme, is designed to equip students with a strong foundation in computing while developing specialised knowledge in artificial intelligence (AI) technologies.

The programme covers core areas of computer science such as programming, software development, databases, and systems design, alongside advanced topics in artificial intelligence, including machine learning, data analytics, intelligent systems, and applied AI solutions. Students are trained to solve real-world problems through industry-relevant projects, practical labs, and collaborative learning approaches.

Graduates of this programme are well prepared for careers in software development, AI engineering, data science, and other technology-driven fields, with the ability to contribute effectively to both local and global industries.

new

BACHELOR OF SCIENCE WITH HONOURS IN COMPUTER SCIENCE WITH ARTIFICIAL INTELLIGENCE 3+0

in collaboration with



Highlights

- Industry-relevant curriculum in programming, software engineering, databases, and systems design
- Advanced AI topics such as machine learning and intelligent systems
- Integrated with micro-credentials, such as certifications from Huawei ICT Academy and IBM SkillsBuild
- Hands-on learning through practical labs and real-world projects
- Collaborative problem-solving and preparation for careers in AI, software development, and data science

Career opportunities

AI Engineer, AI/Software Solutions Architect, Business Intelligence Developer, Cybersecurity Analyst, Data Analyst, Data Scientist, Machine Learning Engineer, Research or postgraduate study pathway in AI/Computer Science, Software Developer, and Systems Analyst.

Offered at

INTI International College Penang

(N/0613/6/0162)(06/2031)(MQA/PA18958)

Intake (s)

JAN, APR & AUG



Committed to quality with Coventry University

Programme structure

Year 1

- Computer Systems
- Mathematical Skills for Computing Professionals
- Programming: Concepts and Algorithms
- Programming: Professional Practice
- Working with Data
- Integrative Project

Year 2

- Advanced Algorithms
- Artificial Intelligence
- Data Science
- Operating Systems, Security and Networks
- Software Engineering
- Theory of Computation
- Hi-Tech Entrepreneurship / Event Project Management (choose 1)

Year 3

- Artificial Neural Networks
- Dissertation and Project Artefact
- Machine Learning
- Project Discovery
- Robots and Intelligent Agents
- Security

MPU subjects

- Appreciation of Ethics and Civilisation (Local students) / Malay Communication 2 (International students)
- Philosophy and Current Issues
- Bahasa Kebangsaan A* / Design Thinking
- Corporate Social Responsibility and Community Engagement
- Integrity and Anti-Corruption

Note: *For Malaysian students who do not have a credit in SPM BM

ENTRY REQUIREMENTS

STPM: Pass in STPM (Science Stream) or its equivalent with a minimum grade C (CGPA 2.00) in Mathematics subject and 1 Science or ICT related subject.

Foundation: Pass Foundation or Matriculation or equivalent with a minimum CGPA of 2.00 and a credit in SPM Additional Mathematics or its equivalent or a credit Mathematics and any 1 of the Science, Technology or Engineering subjects at SPM level or its equivalent.

Students without a credit in SPM Additional Mathematics are required to take and pass the reinforcement Mathematics upon enrolment.

UEC: Pass UEC with at least B in 5 subjects (including English and Mathematics)

A-Level: Pass A-Level with passes in 2 subjects with credit in Mathematics in O-Level or equivalent

Diploma in Computing Fields (Computer Science, Information Technology, Software Engineering, Data Science): Successfully completed Diploma in Computing Fields with a minimum CGPA of 2.50. Any Diploma in Science and Technology with a minimum CGPA of 2.75 and a credit in SPM Additional Mathematics or its equivalent or credit in SPM Mathematics and any one of the Science, Technology or Engineering subjects at SPM level or its equivalent.

Students without a credit in SPM Additional Mathematics are required to take and pass the reinforcement Mathematics upon enrolment.

English Language Requirements:

SPM English Syllabus 1322: Grade 1-6

English 1119: Grade 1-6

GCE O-Level: Pass

IELTS: Band 6.0 and above

TOEFL: 550 and above

TOEFL (computer-marked): 220 or above

UEC: B

INTI INTERNATIONAL COLLEGE PENANG DK249-02(P)

04-631 0138 • No. 1-Z, Lebuh Bukit Jambul, 11900 Bayan Lepas, Pulau Pinang

NEWINTI.EDU.MY